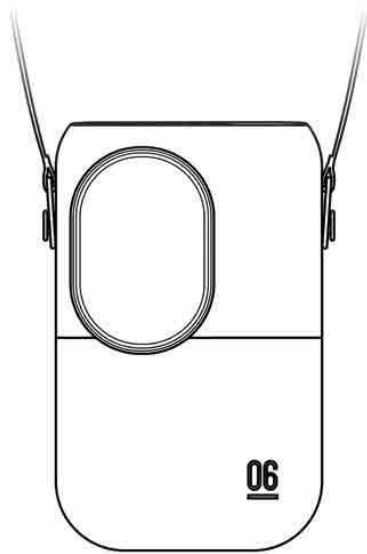


## Cool Human® Hands-Free Portable Misting Body Cooler

### Operating instruction

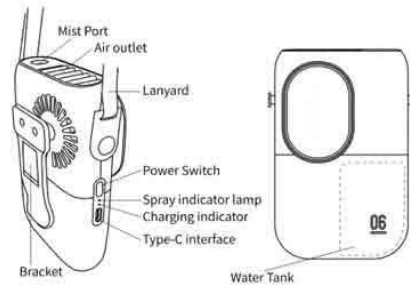


Thank you for using the product  
Please read the manual for safety before using the product

## 1.Product parameters

Product Name: Cool Human® Hands-Free Portable Misting Body Cooler.	
Product model : QW-F26	Spray quantity : 40-60ml/h
Water capacity : 40ml	Product size : 89 × 130 × 44mm
Battery voltage : 3.7V	Weight : 189g
Battery capacity : 2000mAh	Executive standard : GB470627-2008
Rated power : 5V/1A	GB4706.48-2009
Charging current : 1 A(Max)	Inspection : Qualified
Maximum current : 840mA	Place of origin : Shenzhen

## 2.Product parts



## 3.Function Operation

Both fan speed and misting function are controlled by the power switch.  
Short press for fan function. Long press for misting function.

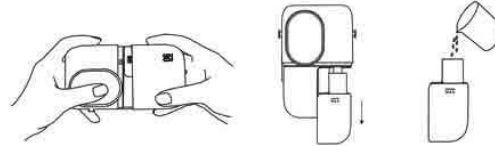
**Fan Function:** first short press the power button to turn on the wind speed to low, second short press switches to medium wind speed; third short press switches to high wind speed, fourth short press turns off the fan.

**Humidification (misting) Function:** first long press the power button (approx. 2-3 sec.) to open continuous spray; second long press to turn on intermittent spray (spray 4 sec on, 4 sec off); third long press to turn off the spray. (Spray timing in continuous mode: ~1 hr.; intermittent mode: ~2 hr.)

**Indicator Light:** when the spray is turned on, the indicator light is blue; when charging the indicator light is red, if the spray function is on when charging, both indicators, red and blue, are on; the red light shuts off after full charge (full charge takes about 2.5 hours).

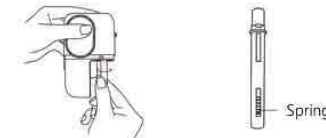
**Insufficient Power:** When the power is insufficient, the indicator light flashes blue and then turns off automatically.

## • Add water to the water tank



After removing the shell as shown in the figure, pull the water tank downward and add an appropriate amount of tap water or mineral water to the water tank.

## • Cotton swab replacement



Rotate the cotton swab tube clockwise as shown in the figure, to remove the cotton swab tube, please pay attention to the bottom spring when replacing it.  
**Troubleshooting:** Misting function does not work: It may take time for the misting function, including on the intermittent setting, to achieve a full rate of spray. Please allow for sufficient time for the misting function to fully activate.

## 4.Cautions

- Please do not assemble or disassemble the product on your own in order to avoid damage or malfunction.
- This product must use the correct power supply.
- Add water to the water tank before use. If there is no water in the water tank, do not use the misting function.
- This machine cannot use corrosive liquids, please use mineral water or tap water only.
- There is a slight difference in spray rate or mist discharge between individual products, which is normal. Different types of water, temperature, air temperature and wind will affect the misting effect.
- Do not intentionally damage the power cord, and do not place the power cord in a hot place. Do not spray mist directly on furniture, clothes or walls.
- Do not put the device near fire or another heat source. Do not expose it to the sun in hot weather.
- Do not cover the mist port to avoid damage caused by water that has accumulated on the machine head.
- When cleaning the product, please do not use the faucet to rinse directly to avoid the possibility of a product short circuit, it is recommended to use a soft cotton cloth to wipe.

- Please do not use detergents, alcohol, and cleaning liquids to clean the device in order to avoid damaging the external plastic parts and prevent the liquids from entering into the device and causing damage.
- Do not add water from the mist port, only add it to the water tank.
- The product is dampproof but not waterproof. Please make sure it does not get wet in the rain and prevent water from entering the device.
- Do not drop the device from tall heights or subject it to strong impact. Do not stick your fingers or any other object into the device.
- When the product is not in use, turn it off, empty the water tank and place it in a dry place.

- Do not carry the device in hospitals, ICU rooms, and other emergency facilities.
- Keep out of reach of children.
- If the device becomes hot, remove it from the body immediately.
- This product is a rechargeable device. After intensive use, the rechargeable battery's capacity may decrease. This is a normal phenomenon and not a quality issue.
- Use only as intended.

## 5.Product Standard Equipment



Main unit x1



Type-C Charging Cable x1



Cotton Stick x 2  
(1 is included in the machine)



Lanyard x1



Instruction Manual x1